

### Energy Efficient Nexus 7000

Cisco's Nexus 7000 uses highly efficient power supplies, balanced power redundancy schemes and device intelligence to support the scalability for today and tomorrow's data center environments. High density and device consolidation increase asset utilization by avoiding additional inter-switch ports.

**FACTS**

- Nexus 7000 uses power supplies with +90% power supply efficiency above 50% load - reduces power wasted as heat and reduces associated data center cooling
- Redundancy modes for power supply or GRID failure
- 54% reduction in power from device consolidation
- Typical power values up to 30% less due to optimized cooling system design
- Up to 83% lower power per 10GE port than previous technology

### Actual Savings through Consolidation

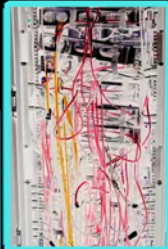
Requirement:  
64 Line Rate 10GE Ports with full bandwidth

Solution: 1 Nexus 7010

Option	Typical Power
Option 1	12,096 Watts
Option 2	5,543 Watts
<b>Savings</b>	<b>54%</b>

## From Cabling to Your Data Center Organization – UCS Simplifies

What does your data center organization look like?



From ad hoc and inconsistent...



...to structured, but siloed, complicated and costly...



...to simple, optimized and automated

## Key Benefits of Unified Computing System



Reduce DC power consumption by 33%  
76 VMs per kW drives greater DC efficiency  
Extends the lifecycle of current data center 6 years



Wire once, connect to any  
40% savings on cable infrastructure




\$21M compute cost avoidance  
\$92M storage cost avoidance



Service provisioning reduced to 1 hour from 200  
Zero-downtime operations

## Driving Efficiency into the Data Center Operation

Products	Solutions	Services	Best Practices
<p>Cisco Data Center Power Supplies are +90% Efficient (AC)</p> <p>Superior power per work unit performed when measured at the systems level</p> <p>Side air flow changing with rack based solutions available</p> 	<p>Storage: Consolidation</p>  <p>VM Services: Security</p>  <p>Provisioning Power Management</p>	<p>Data Center Advanced Services:</p> <p>Facilities Assessment</p> <p>Power</p> <p>Cooling</p> <p>Security</p> <p>Cabling</p> <p>Management (CRE)</p> <p>Cisco/APC Facilities Assessment Services</p>	<ol style="list-style-type: none"> <li>1. Virtualize and Consolidate</li> <li>2. Benchmark Energy Infrastructure Efficiency Utilization Cost</li> <li>3. Assess Technology</li> <li>4. Assess Organization</li> <li>5. Define Scope</li> <li>6. Set realistic goals</li> <li>7. Share Practices</li> </ol>

