

Abhishek Industries Limited (Trident Group)

Presented by :
Sandeep Bhaskar
Arvind Tyagi



**A
L
U
E
S**

**I
S
I
O
N**

Inspired by Challenge,

We will Add Value to Life &

Together Prosper Globally

To provide Customer Satisfaction,

Through Teamwork,

Based on Honesty & Integrity

For Continuous Growth & Development



THE GROWTH STORY.....

1984

\$ 1.25 Mn
Investment

\$ 75 Mn

Y 2000

\$ 125 Mn

Y 2002

\$ 140 Mn

Y 2004

\$ 225 Mn

Y 2006

\$ 300 Mn

Y 2008

\$ 400 Mn

Y 2009



Trident Strides...

Rs. 15 Billion Global Enterprise

**Diverse Business Portfolio
ranging across :-**

-  Yarns
-  Home Textiles
-  Papers
-  Energy
-  IT

Compounded Annual Growth Rate of over 30%



Business Overview



Terry Towel
40,000 TPA



Yarn
50,000 TPA

2,50,000 spindles

- 1,50,000 Spindles - Sanghera
- 1,00,000 Spindles - Budni
- 1920 Rotors



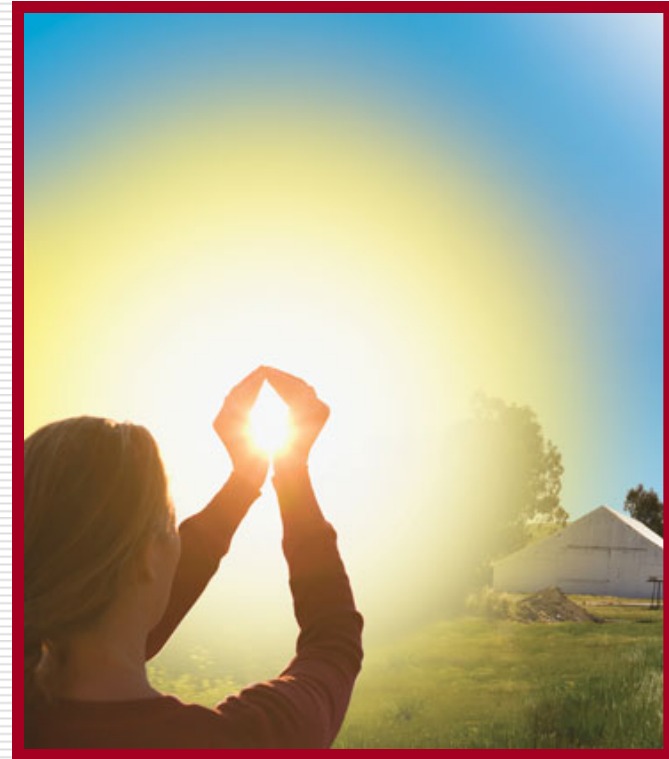
Paper
1,64,250 TPA



Business Overview



Sulphuric Acid
100,000 TPA



Energy
50 MW





Amongst Top 3 Terry Towel Companies of the World...

World's Largest Wheat Straw Based Paper Company...

One of India's Largest Spinning Facility

Technology Leader...

AMONGST TOP 50 GREAT PLACES TO WORK



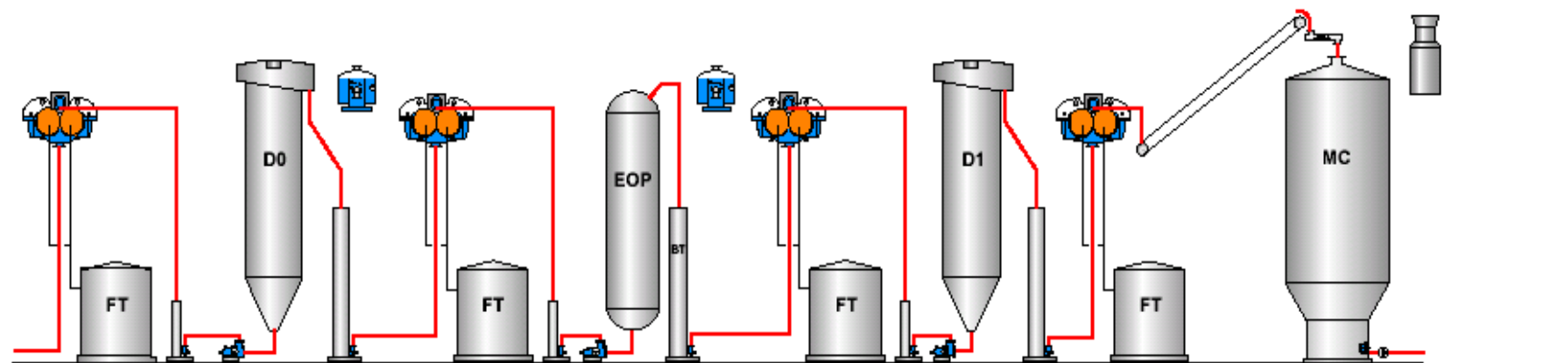
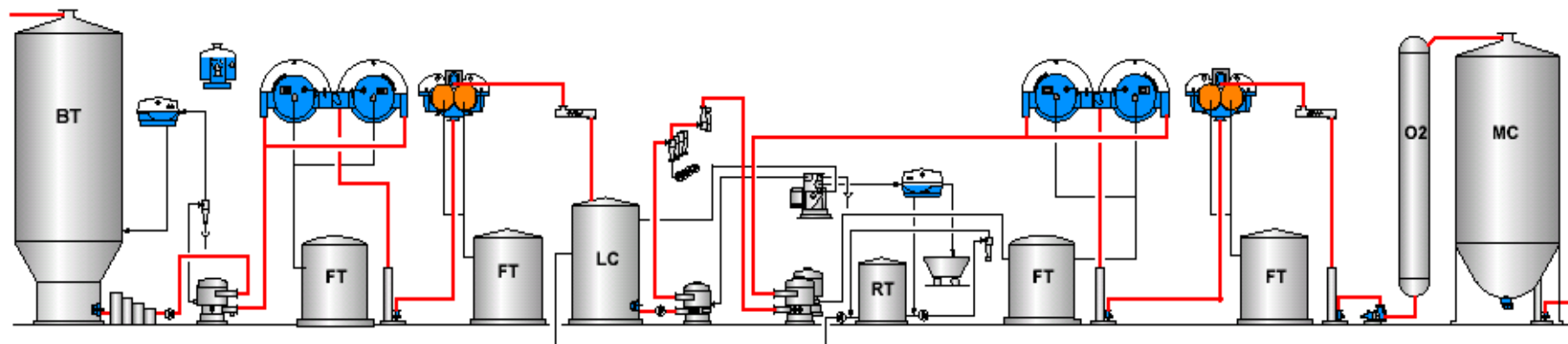
New Fiberline

Wheat straw based world's largest pulp mill having ECF bleaching

- Wheat straw Fiber line : 225 TPD Bleached Pulp.
 - Clo2 Plant : 6 TPD Clo2
 - Oxygen plant : 300 Nm3/Day
-

ABHISHEK INDUSTRIES LTD (AIL - PCD), India

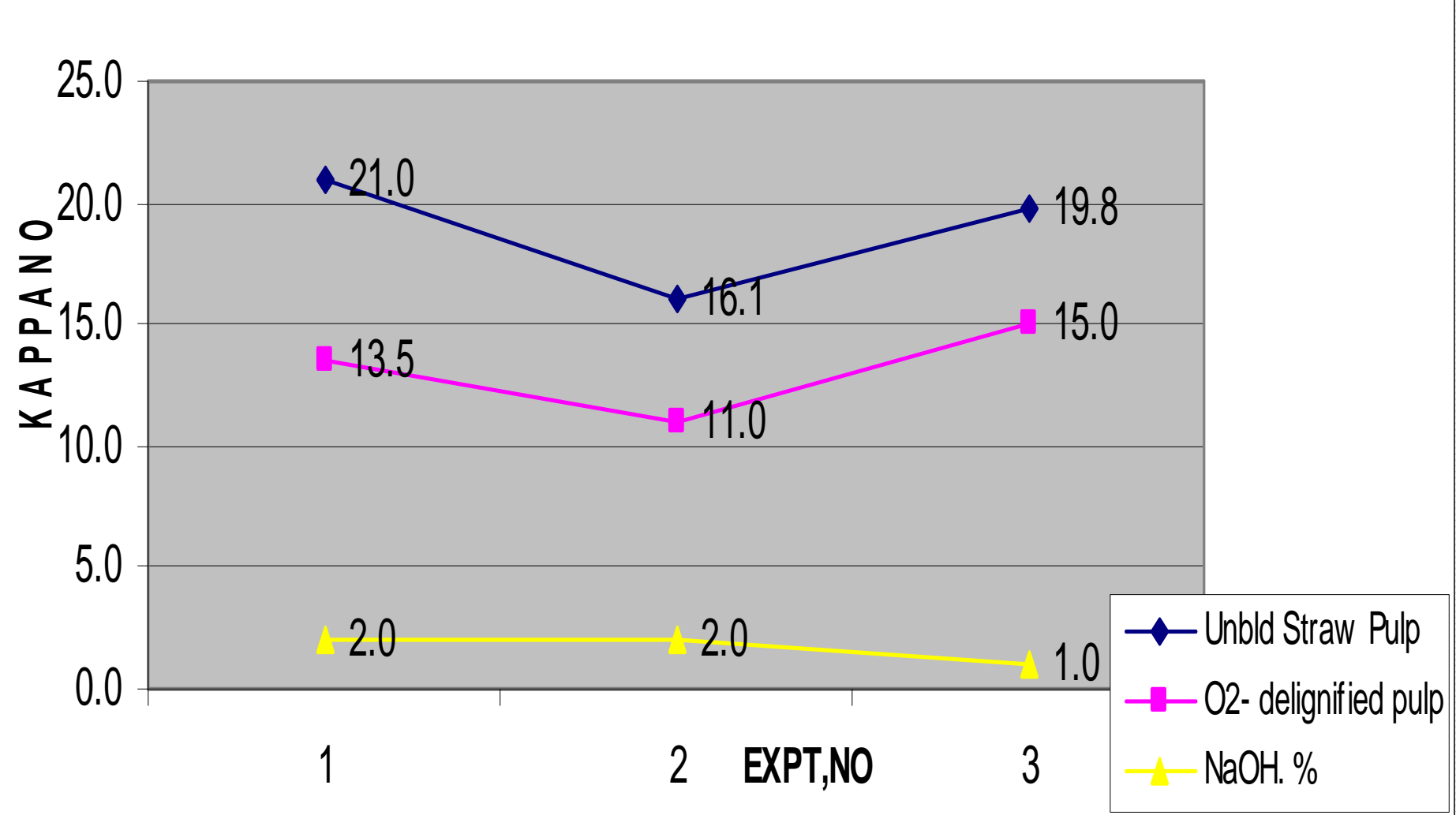
Fiber Line - Wheat Straw



CONSTANT CONDITIONS OF ECF BLEACHING OF OD1EpD2 SEQUENCE

PARAMETERS	O	D₁	E_P	D₂
Consistency, %	10	8	10	8
Temperature, °C	120	70	65	70
Retention Time, Mt	60	180	60	180
pH	10.5	4.5	9.5	4.5
O₂ Pressure, Kg/cm²	5	-	-	-

REDUCTION IN KAPPA No. BY OXYGEN DELIGNIFICATION STRAW SODA PULP



Quality parameter

- Brightness = 83-84 % ISO
- Tear factor = 55-56
- Breaking Length = 5500m

Quality of pulp has enabled paper machine to run at high speed and make A grade quality paper using wheat straw based pulp

BL liquor to Recovery

- Increase in solids generation with introduction of ODL in wheat straw and increasing solids from 10% to 11%
-

Limitation and solutions at pulp

- Scaling at post ODL and EOP stage and we are able to counter it by using online anti scaling chemicals
-

World's Class Practices

- ClO₂ production with R-10 process
-

World's Class Practices

- ❑ SKF for equipment reliability by doing vibration monitoring
 - ❑ Approach from breakdown to predictive maintenance
-

World's Class Practices

- Power saving initiatives- replacement of inefficient vacuum pumps
-

World's Class Practices

- Water conservation
 - Installation of cooling tower vacuum pumps at paper machine for sealing water
 - Use of recovery condensate in pulp mill
 - Use of SAP hot water in pulp mill for washing
 - Collecting used sealing water in pit and reusing it
-

World's Class Practices

- GCC with AKD for better paper quality
-

World's Class Practices

- Use of multi layer fabric for felts/wire
 - Retention improvement
 - Formation improvement
 - Better fabric life
 - Improvement in printing quality
-

World's Class Practices

- Installation of Uni screen at first dryer group to control breaks
-

World's Class Practices

- ❑ Copier production on high speed machine using agro based pulp
 - ❑ High speed machine from Alimond based on agro residue
 - ❑ Enhancement of machine speed from 325mpm to 500mpm and sustaining machine OEE @90%
-

World's Class Practices

- First in world to process BL concentration up to 65% from evaporator from wheat straw WBL
 - Dozing of white liquor in WBL feed to evaporator for maintaining RAA in evaporator to control SCBL viscosity
-

World's Class Practices

- ❑ Lime kiln installation to minimize solids waste generation
 - ❑ Fuzzy logic system for optimization of lime kiln for lime sludge
 - ❑ Use of clari disc filter instead of rotary filters for lime sludge
-

World's Class Practices

- Octopus Head box for uniform pulp distribution
 - Trinip press for better surface finish
 - Twin wire system for better formation of paper
 - Pasaban folio sheeter
 - Online reel packing system
-

World's Class Practices

- ❑ ECH wills cutter for perfect A4-line copier finish
 - ❑ World class R&D lab development with latest equipment
-

World's Class Practices

- Product launches :
 - Spectra Copier paper
 - My choice Copier paper
 - LOTUS Premium Copier paper
 - Crystal Line SSM paper
 - Silver Line SSM paper
 - Diamond Line SSM paper
 - Nature Line – Natural shade paper
 - Prime Line Writing & Printing paper
-

THANKS
